

Top 

Easy and efficient NonStop configuration control and management for operations and systems management

TOP reduces complex tasks to simple point-and-click operations to save time, increase productivity, and reduces the potential for errors.

The Operations Pack (TOP) provides a front-end to HP NonStop server systems and networks using a standard interface. Using TOP any authorized user can operate a HP NonStop server much more effectively and with fewer mistakes. Experienced staff accomplish much more and inexperienced staff learn faster.

TOP is an easy-to-use management tool providing command access to your HP NonStop™ Expand network, subsystems and components from a Windows workstation.

Key features

- Familiar industry interface allows operators to move between platforms productively
- Point and click to navigate, view and/or edit files, drag/drop to copy files or other components
- Extensive OSS support
- Point and click Backup facility
- Individual operator security profiles to prevent unauthorized access
- Wizards to increase productivity
- Built in block-mode 6530 terminal emulation removes the need for a separate emulator
- Command auditing and logging of changes for system audit purposes
- Provides a consistent look for all Subsystems

- Provides top-to-bottom configuration, control and management access to most NonStop subsystems
- Integrated drag-and-drop ftp tool
- Powerful Guardian and OSS file editor with syntax support for many languages including TAL, TACL, COBOL, C, C++ and Java.

Solution overview

TOP consists of four subsystem managers a system Explorer, (each of which can be licensed separately) and a Software Developers Kit (SDK).

Top Explorer:

An easy-to-use GUI for accessing nodes and system components. With TOP Explorer you can select system components, display information, monitor system status and manage your NonStop system more efficiently. It provides in-depth configuration, control and management access to the most common subsystems and tasks.

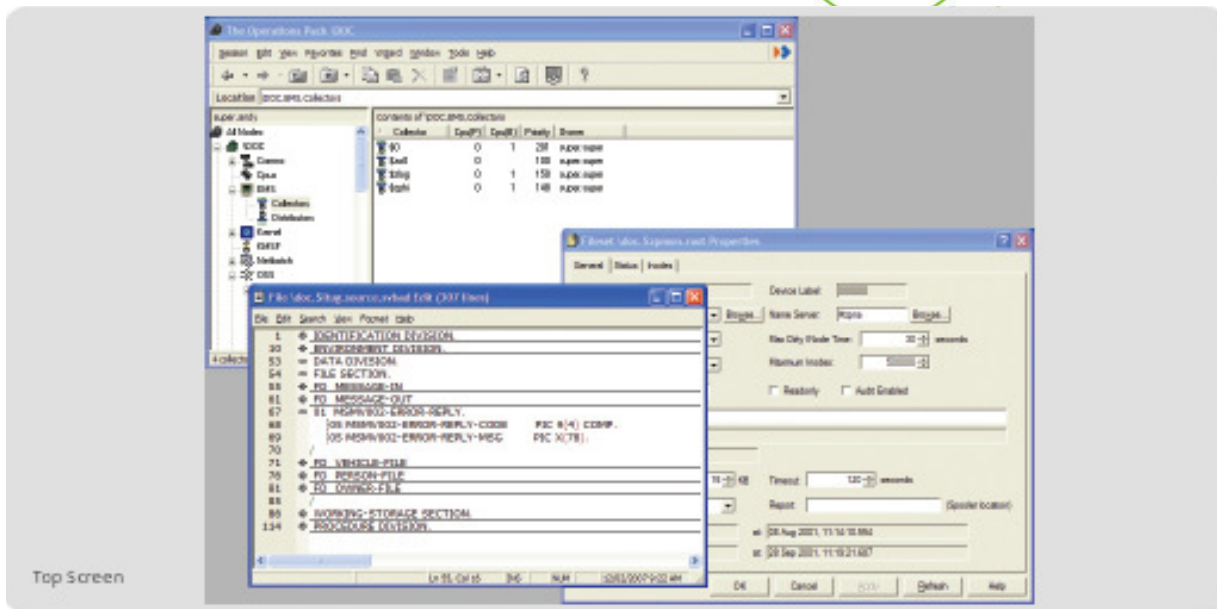
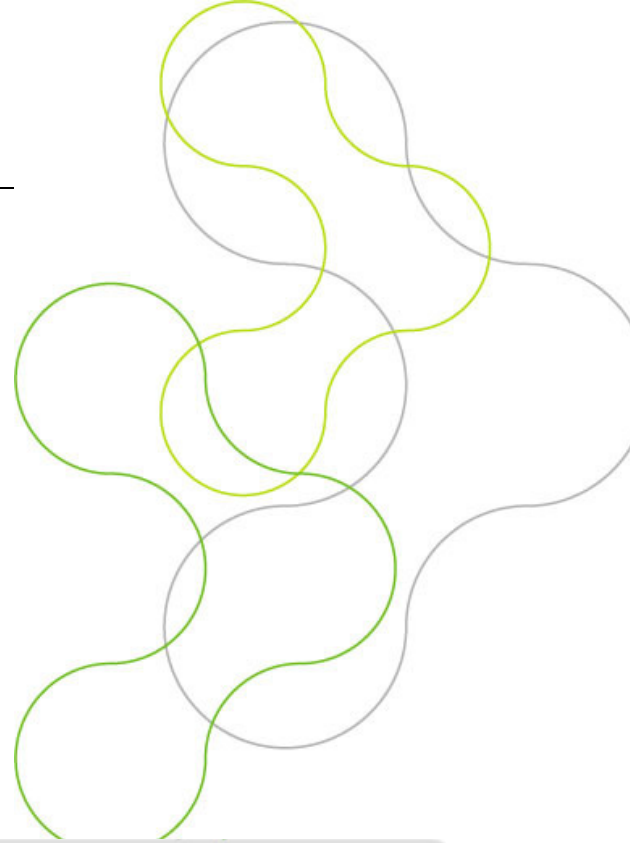
Top Explorer allows syntax-free configuration and management of TCP/IP, EMS, Kernel, KMSF, Netbatch, OSS, Safeguard and Storage subsystems. You can configure and run complex DSAP and SafeArt reports and view them with TOP's customwritten interface or export them.

TOP Spool

A comprehensive spooler monitoring and management tool for NonStop server and workstation printers. TOP Spool will manage and monitor standard spooler objects such as spooler processes, collectors, print processes, devices (printers), locations, and jobs.

TOP User ID

An easy-to-use GUI to manage NonStop user IDs, aliases, and groups. TOP UserID provides a graphical layer that preserves your existing Safeguard or Guardian security investment and enables you to perform user management tasks on any node.



Top Path:

A powerful tool for Pathway configuration, management and operation. TOP Path will manage and monitor standard Pathway objects, such as Pathmon processes, server classes and TCPs. TOP Path provides an instant view of the status of an individual Pathway and is the primary interface to all your network's Pathway systems.

Top Comms:

A comprehensive communications manager. That detects the communications subsystems that are available and present on your system and displays them graphically.

Top SDK:

A software toolkit to build workstation-based NonStop server applications. Using the SDK you can design workstation-based programs to log on, run start and stop command interpreters, issue commands, and receive responses.

Benefits

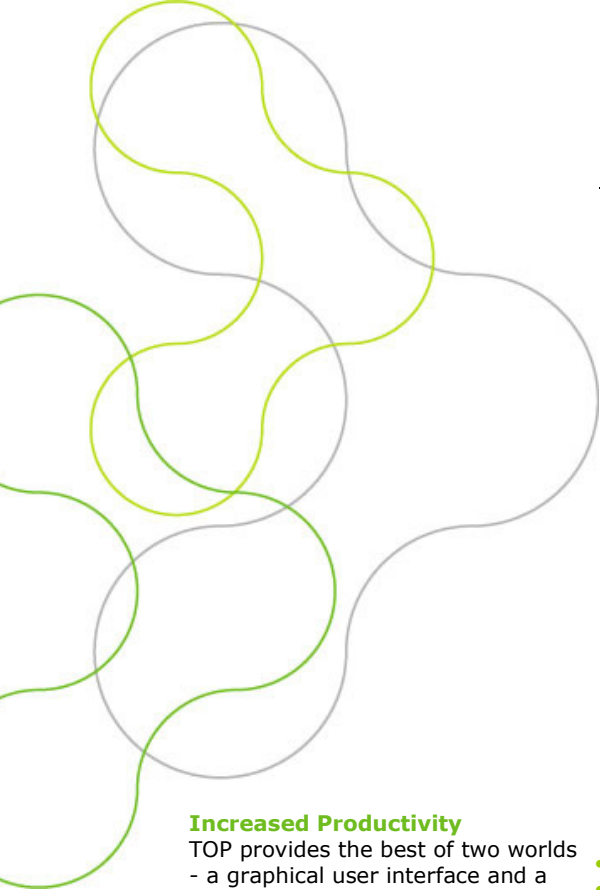
Reduced Downtime

NonStop servers are used in business critical environments where the cost of downtime is typically very high. It is recognized that the most common cause of outage of all NonStop servers relates to the human computer interaction. Improving the

human computer interface therefore ultimately reduces the potential for downtime.

Less Training

TOP replaces complex command line interactions with recognizable point-and-click and drag-and-drop functions. Therefore TOP reduces the skill and training required to operate and manage NonStop servers allowing operators from other platforms to be cross-utilized more effectively.



Increased Productivity

TOP provides the best of two worlds - a graphical user interface and a 650 terminal emulator. With two means of access, TOP enables users to learn how to use NonStop servers faster while experienced users can get direct access to command-line tools when required. Experienced NonStop users will find they can perform their work faster, with fewer syntax errors and less reference to the manuals.

- TCP/IP
- 3MB disk space
- The server object file (MIP) must be licensed before it will run.

Free Download

Download the software and request a 60 day trial license at:
<http://top.gresham-computing.com>

Greater Self-Sufficiency

With an easy-to-use interface routine work can be assigned to less-skilled staff and end users are able to service many of their own enquiries. This allows skilled resources to be deployed more cost effectively.

System Requirements

Workstation

- Microsoft Windows (Windows 98, ME, NT4.0, 2000 or XP)
- 64MB RAM
- 70MB disk space
- Administrator access is required to install TOP

NonStop Server Requirements

- Management Interface Process (MIP) - Available from Gresham with TOP
- HP NonStop Kernel (Guardian) D20 (or later) on K-series systems
- HP NonStop Kernel (Guardian) G02 (or later) on S-series systems
- HP NonStop Kernel (Guardian) H06 (or later) on Integrity NonStop systems

About Gresham

Gresham Computing plc (LSE:GHT) specializes in the provision of real-time financial solutions to banks and corporates, and has a well-deserved reputation for technical excellence, reliability and a strong service culture. Our storage division helps the largest data users to better manage the unrelenting growth of data.

Further information

For more information on how TOP can help your company visit www.gresham-computing.com or you can email us at top@gresham-computing.com

Alternatively you can contact our offices directly.

Europe, Middle East and Africa

T +44 (0)20 7653 0200

Americas

T +1 212 792 4233

Asia Pacific

T +61 2 9955 7660

