

TOP Sample Profiles Configuration

Aim

Configure TOP so that SUPER.SUPER has access to everything, SUPER.OPS has access to Pathway and Spoolers only, other users have no access.

Procedure

MIP Configuration

Start MIP with the flag -p1

This will make MIP create some default profiles.

The PROFILES file created by MIP in the same subvolume contains the access profile data – normal NonStop security considerations apply to it.

Profiles Configuration

Something to remember with profile entries is that if you do not have access to a higher part of an access path (eg \node, or \node.Pathways), then you will never see anything below that point even if you have access to it.

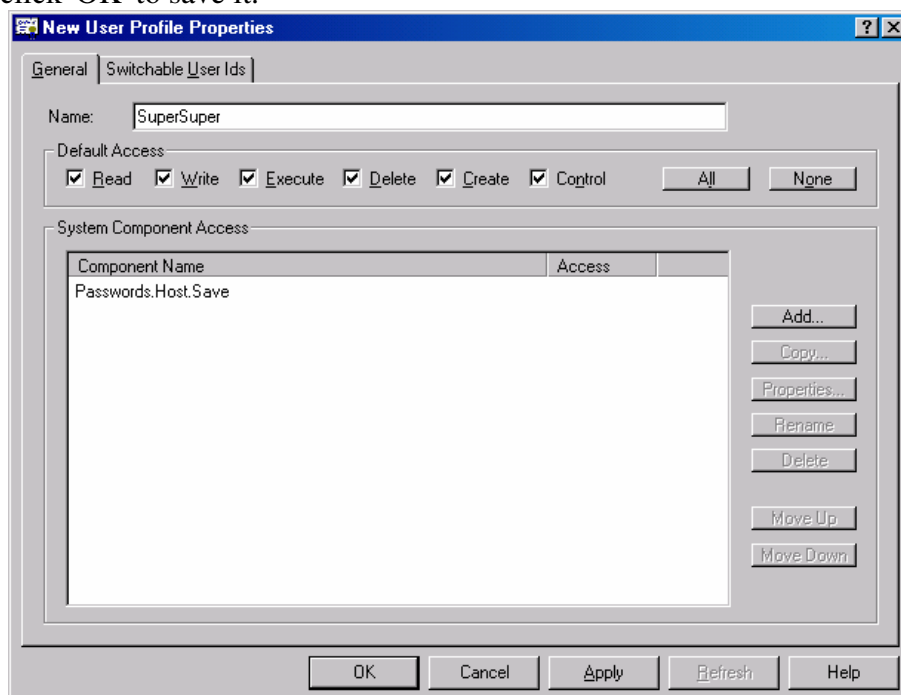
These steps assume that the profiles file has not been altered from the defaults created by MIP.

Creating the SUPER.SUPER profile

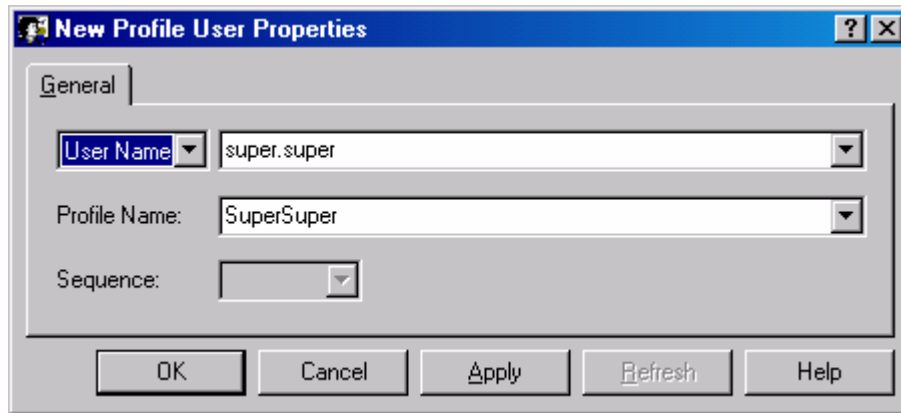
Logon to TOP as SUPER.SUPER

Click on User Profiles|Profiles in the left-hand pane.

In the right-hand pane click on the {Super Profile} and drag it into white space. This will allow you to create a new copy of that profile. Name it (say) SuperSuper and click 'OK' to save it.



We now have to associate the super.super user with that profile.
Click on User Profiles|Users in the left-hand pane.
Right-click on "Users" and enter "super.super" as the user and SuperSuper as the profile in the dialog box.



Create SUPER.OPS profile

We can either modify the supplied {Super Profile} or set up a specific profile for SUPER.OPS. The procedure is pretty much the same - if we were setting up a dedicated profile for SUPER.OPS we'd create a new profile as we did for SUPER.SUPER. In this case, we'll just modify the existing {Super Profile} and any super user will come under its influence.

Double-click User Profiles|Profiles|{Super Profile}

The properties of this profile should be displayed in a dialog

Change the Default Access to None (click the None button).

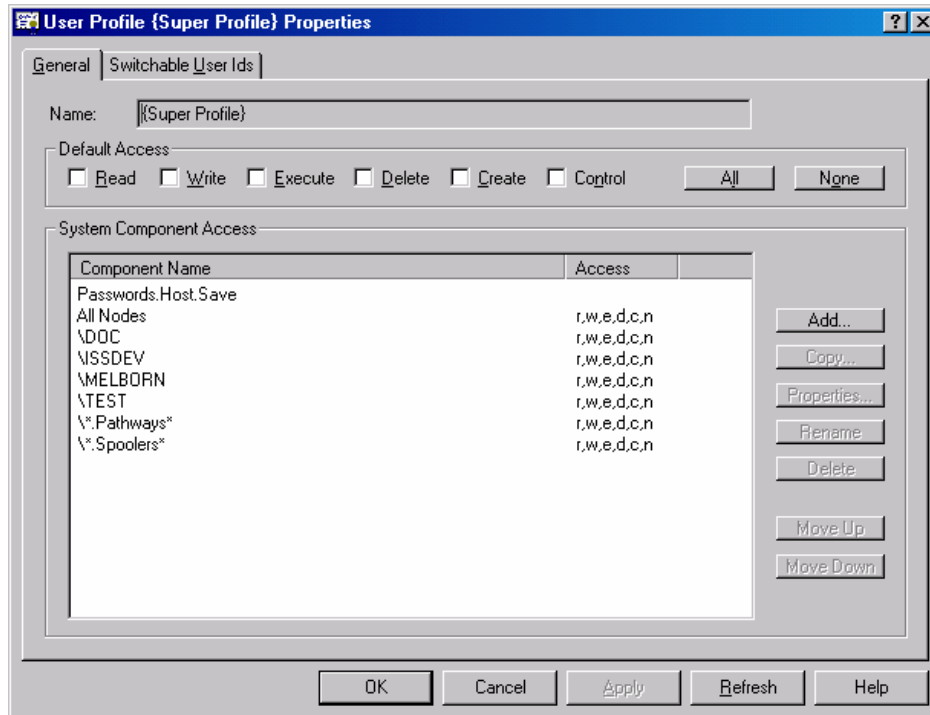
Drag the node "All Nodes" from the main TOP window onto the properties dialog and drop it.

Drag/drop each NonStop node in the same way.

Drag a Pathways node and a Spoolers node from one of the nodes.

Rename the Pathways entry in the profiles properties so that it is *.Pathways*

Rename the Spoolers entry in the profiles properties so that it is *.Spoolers*

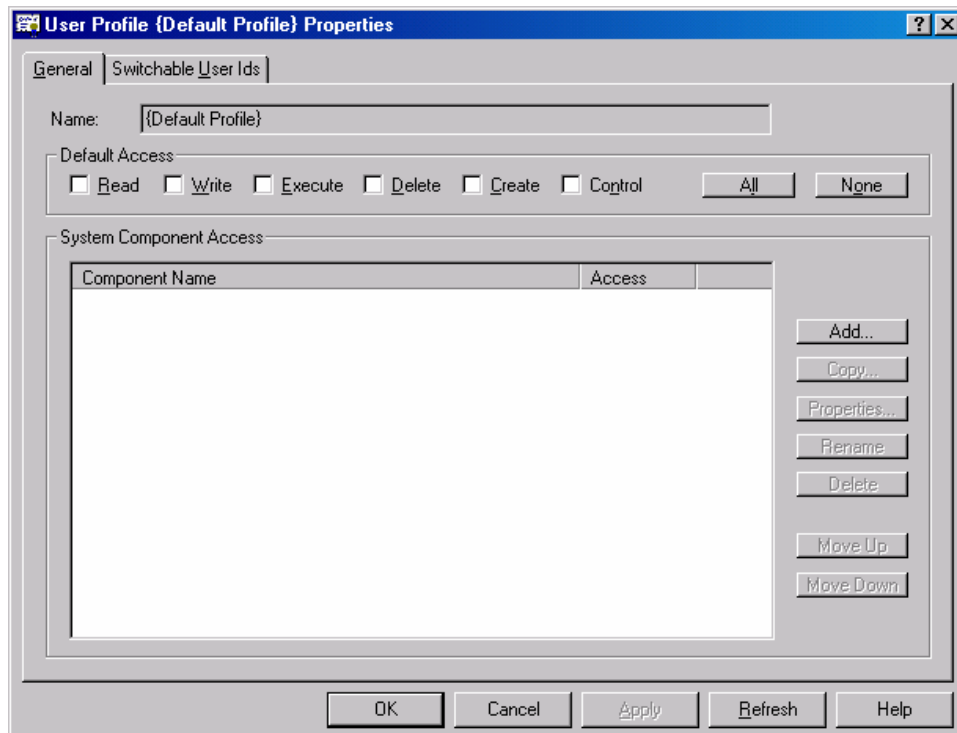


Disable profile for all other users

Double-click User Profiles\Profiles\{Default Profile}

Set the Default Access to None

Delete all of the access entries

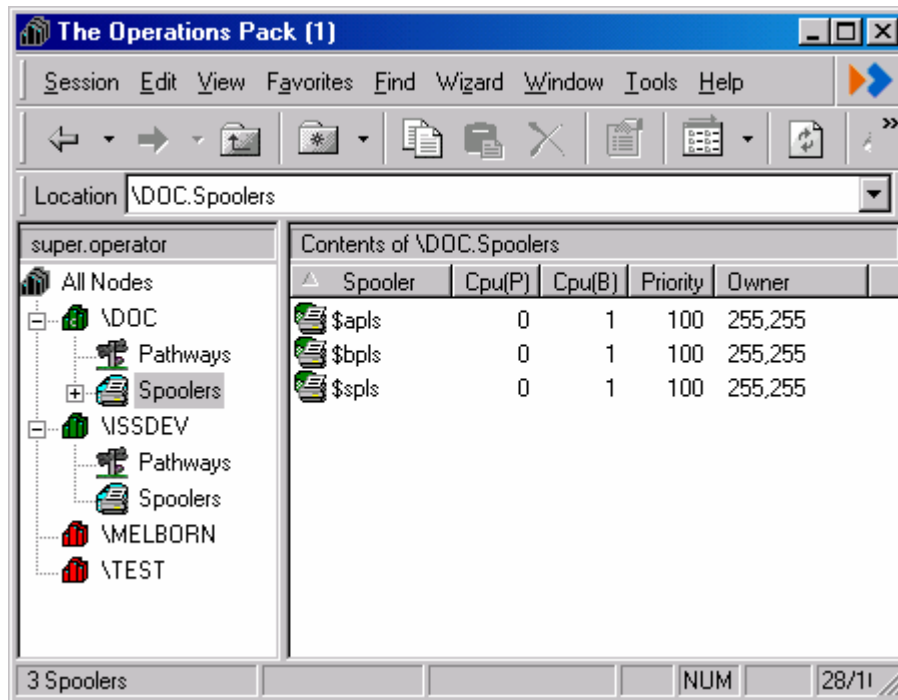


Results

Logoff and log on again as SUPER.SUPER - make sure that you can still see everything.

Logoff TOP and logon again as SUPER.OPERATOR - hopefully you will only be able to see the Pathways and Spoolers branches in each node. This will apply to all SUPER users except for SUPER.SUPER as we are using the built-in {SUPER PROFILE}.

You may want to refine the access for each node, maybe make the access read-only.



Logoff TOP and login as a non-SUPER user. This should be pretty unrewarding:

