

# TOP Sample Profiles Configuration

## ***Aim***

Configure TOP so that SUPER users have access to everything, operators have full access to Pathway and nothing else and other users have no access.

## ***Procedure***

### **MIP Configuration**

Start MIP with the flag -p1

This will make MIP create some default profiles.

The PROFILES file created by MIP in the same subvolume contains the access profile data – normal NonStop security considerations apply to it.

### **Profiles Configuration**

Something to remember with profile entries is that if you do not have access to a higher part of an access path (eg \node, or \node.Pathways), then you will never see anything below that point even if you have access to it.

These steps assume that the profiles file has not been altered from the defaults created by MIP.

The default profile for super group users {Super Profile} is OK, so we won't change it at all. The default profile for non-super users must be altered to prevent them accessing the NonStop through TOP. A new profile must be created for operations so that users associated with the operations profile can only see and access Pathway objects.

### ***Creating the OPERATIONS profile***

Logon to TOP as SUPER.SUPER

Click on User Profiles|Profiles in the left-hand pane.

In the right-hand pane click on the {Super Profile} and drag it into white space. This will allow you to create a new copy of that profile. Name it (say) Operations and click 'OK' to save it.

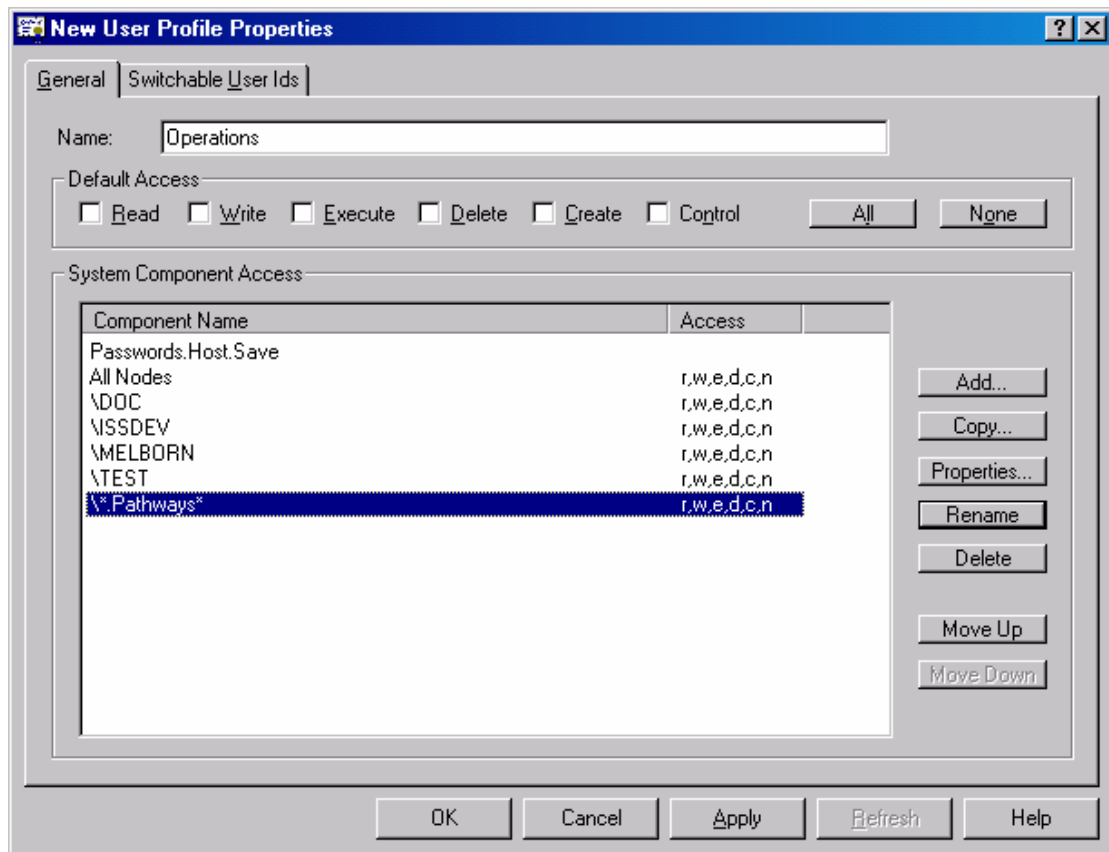
Change the Default Access to None (click the None button).

Drag the node "All Nodes" from the main TOP window onto the properties dialog and drop it.

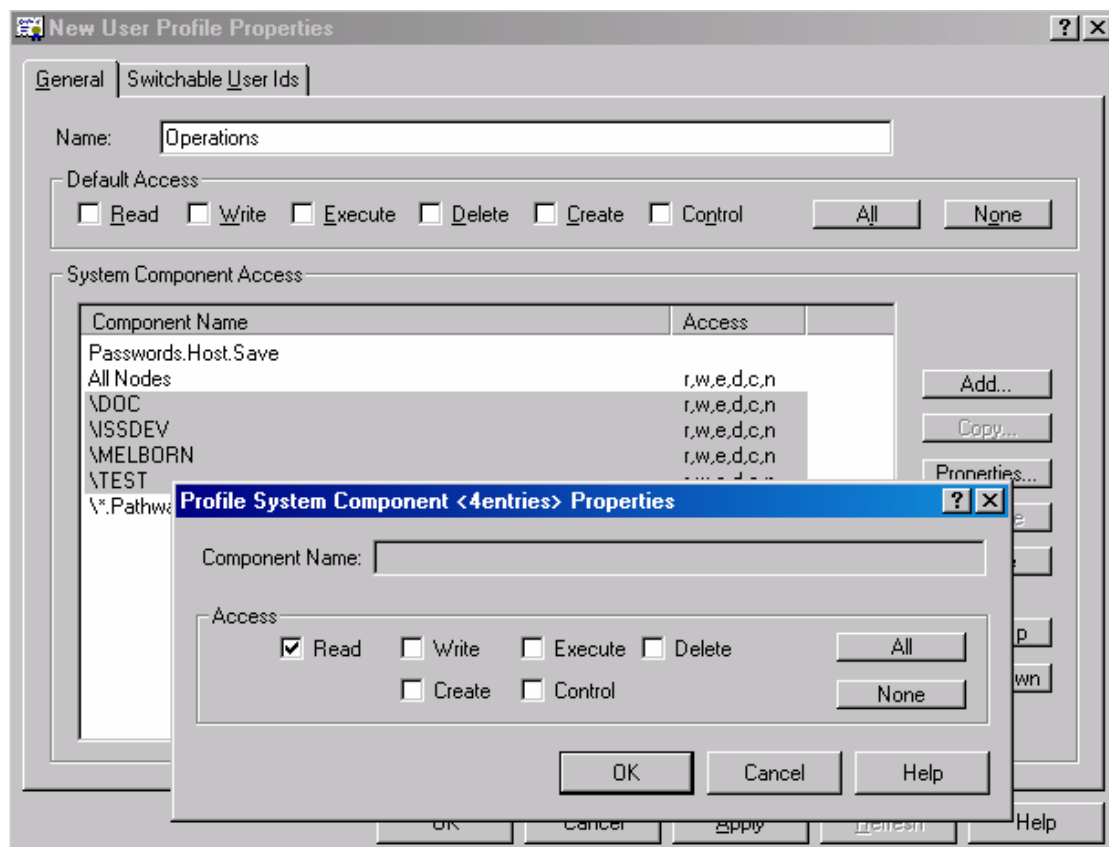
Drag/drop each NonStop node in the same way.

Drag a Pathways node from one of the nodes.

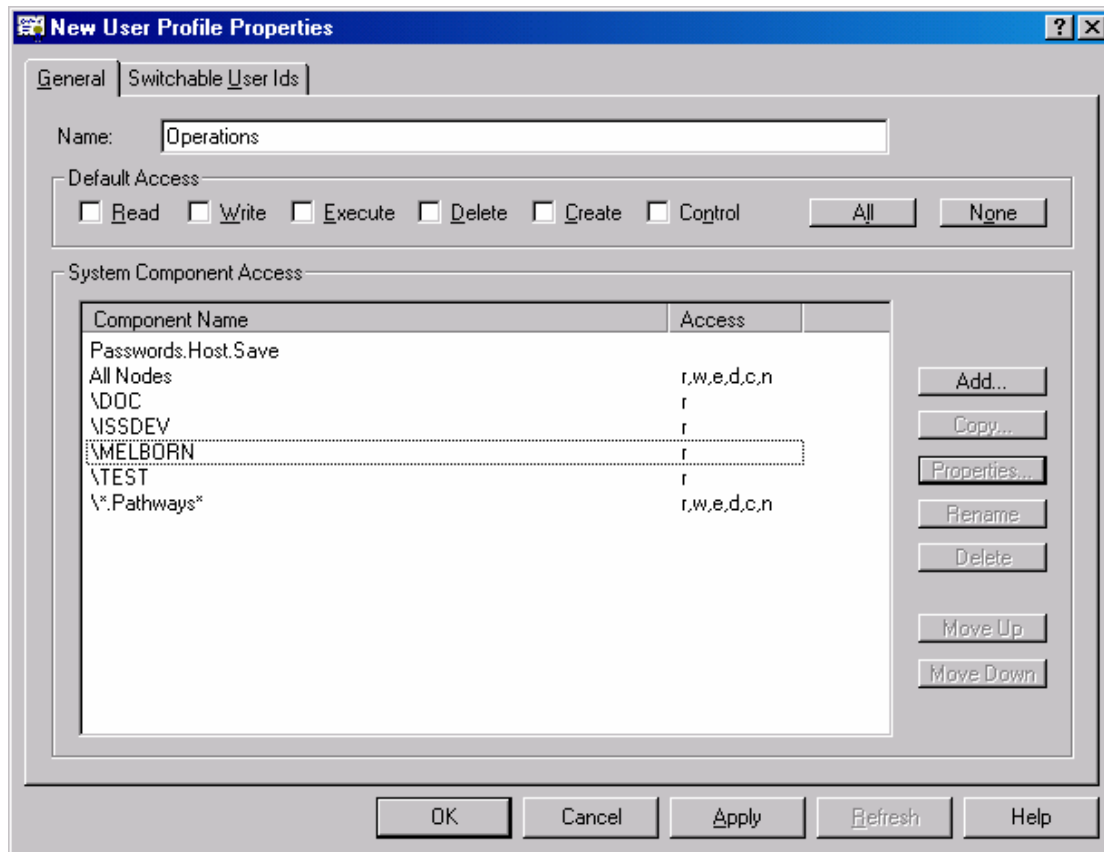
Rename the Pathways entry in the profiles properties so that it is \\*.Pathways\*



Alter the access for each node entry so that it is read-only.



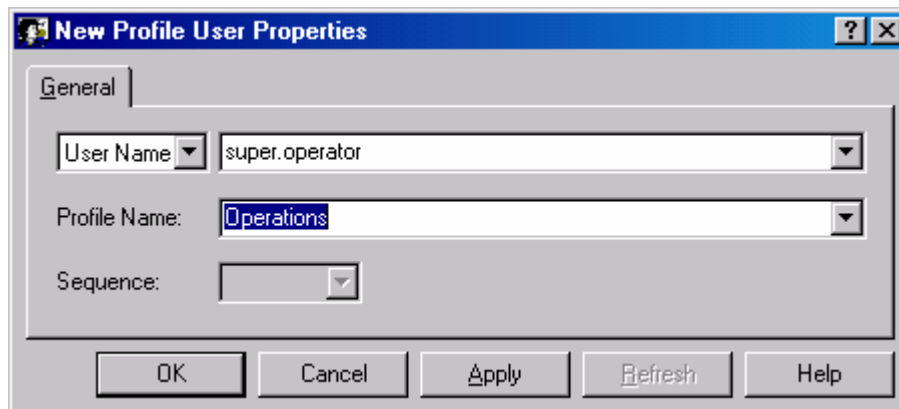
The Operations profile properties should now look like this:



We now have to associate the operations users with that profile.

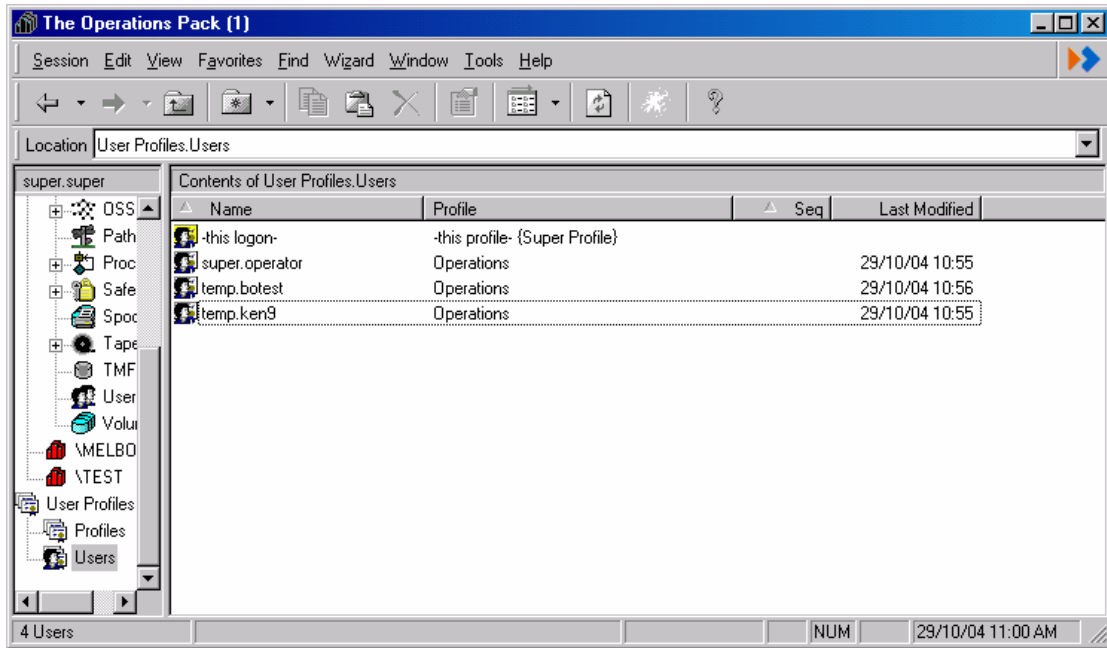
Click on User Profiles|Users in the left-hand pane.

Right-click on "Users" and select one of the operations users as the user and Operations as the profile in the dialog box.



In this case, the user is a super user (super.operator), but that is irrelevant.

Repeat for other users who you want to have the same profile (you can drag/drop an existing user to copy it):

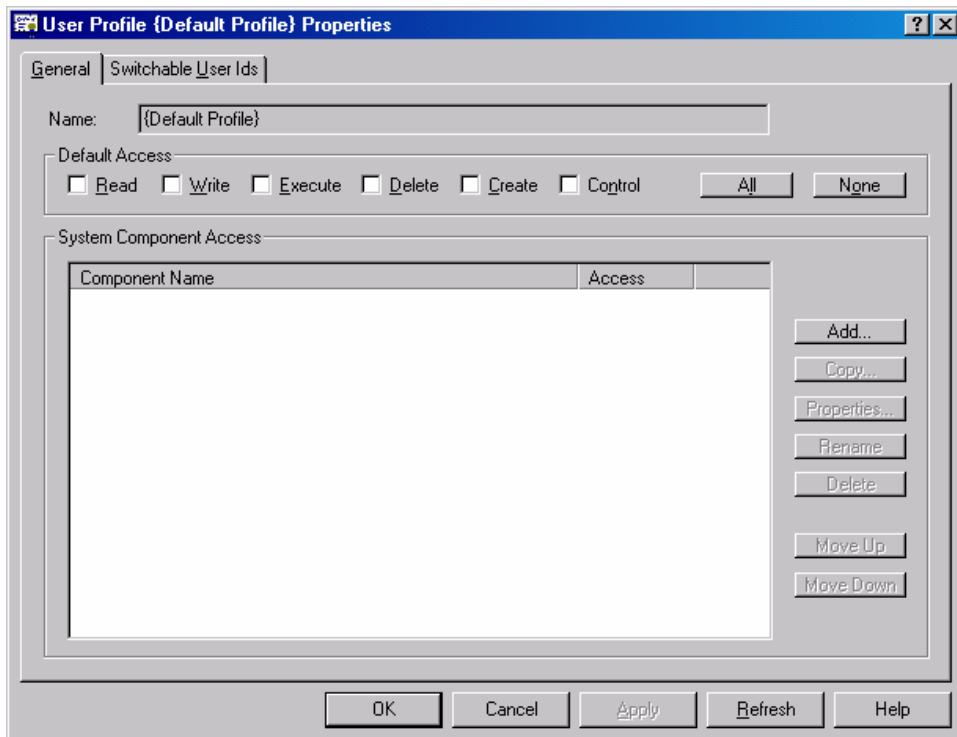


*Disable access for all other users*

Double-click User Profiles\Profiles\{Default Profile}

Set the Default Access to None

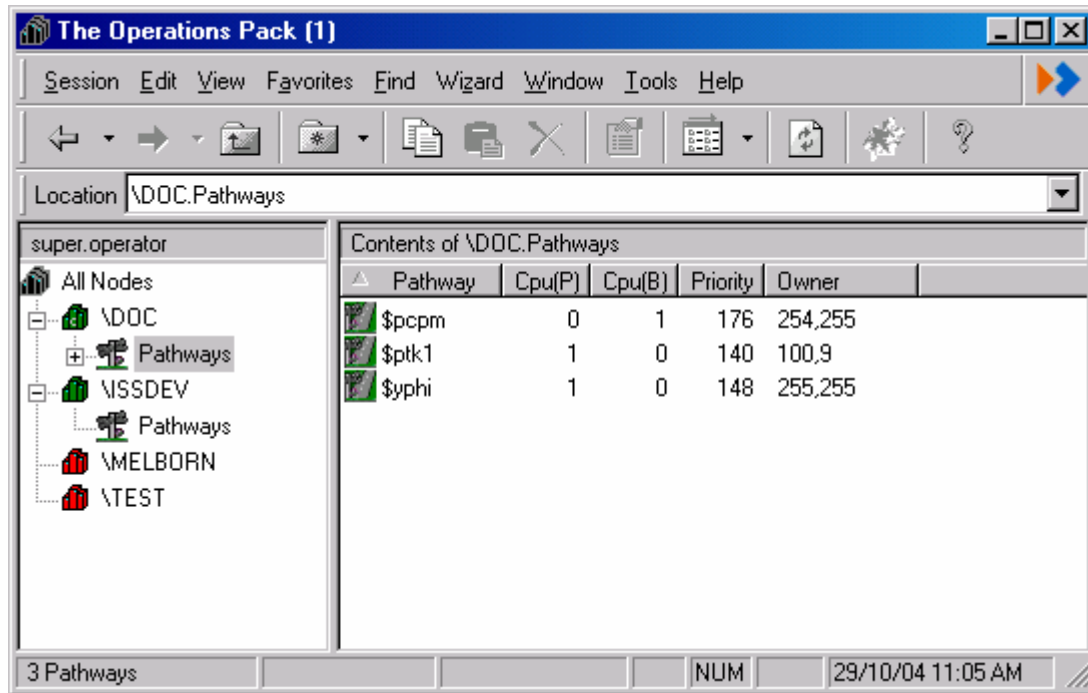
Delete all of the access entries



## Results

Logoff and log on again as SUPER.SUPER - make sure that you can still see everything.

Logoff TOP and logon again as one of the users assigned the Operations profile - hopefully you will only be able to see the Pathways branch in each node.



Logoff TOP and login as a non-SUPER user. This should be pretty unrewarding:

